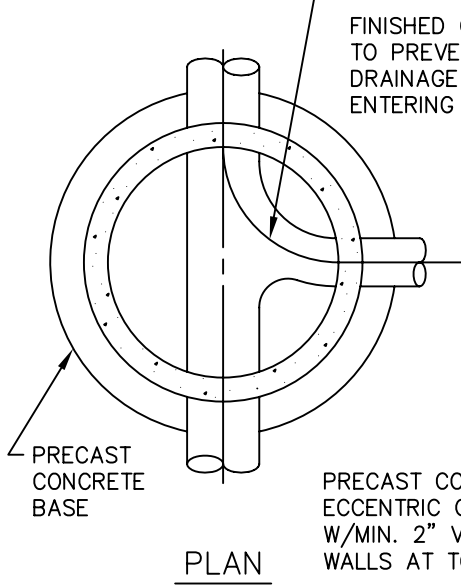


APPENDIX A
STANDARD DETAILS

Appendix A — Standard Details

<u>Figure No.</u>	<u>Title</u>
1.....	Standard Sanitary Manhole Detail
2.....	Sanitary Drop Manhole Detail
3.....	Sanitary Manhole Installed over Existing Sewer
4.....	Typical Existing Manhole Entry Detail
5.....	Force Main Drop into Sanitary Manhole
6.....	Exterior Joint Collar and Chimney Seal Detail
7.....	Sanitary Sewer Manhole Frame and Cover
8.....	Watertight Sanitary Manhole Frame and Bolted Lid
9.....	Service Connection for Shallow Sewers (Alt #1 and Alt #2)
10.....	Industrial Sewer Service Connection
11.....	Lateral Connection Into Existing Sewer
12.....	First Class Pipe Laying Method for Rigid Conduits (Ductile Iron)
13.....	First Class Pipe Laying Method for PVC Gravity Sewer
14.....	PVC Force Main Pipe Trench Detail
15.....	Surface Restoration Details
16.....	Sidewalk Restoration Detail
17.....	Force Main Tracer Wire Riser Detail
18.....	Thrust Blocking Details for Pressure Main
19.....	Railroad Pipe Crossing Detail
20.....	State Highway Boring/Casing Detail
21.....	Sanitary Sewer Stream Crossing Detail
22.....	Typical Lift Station Plan
23.....	Typical Lift Station Section
24.....	Typical Pump Station Electrical and Pump Control Mounting Detail
25.....	Typical Pump Station Service Pole for Pump Station Services
26.....	Typical Pump Station Power Distribution Diagram
27.....	Bypass Pump Quick Connection Detail
28.....	Grease Trap Detail

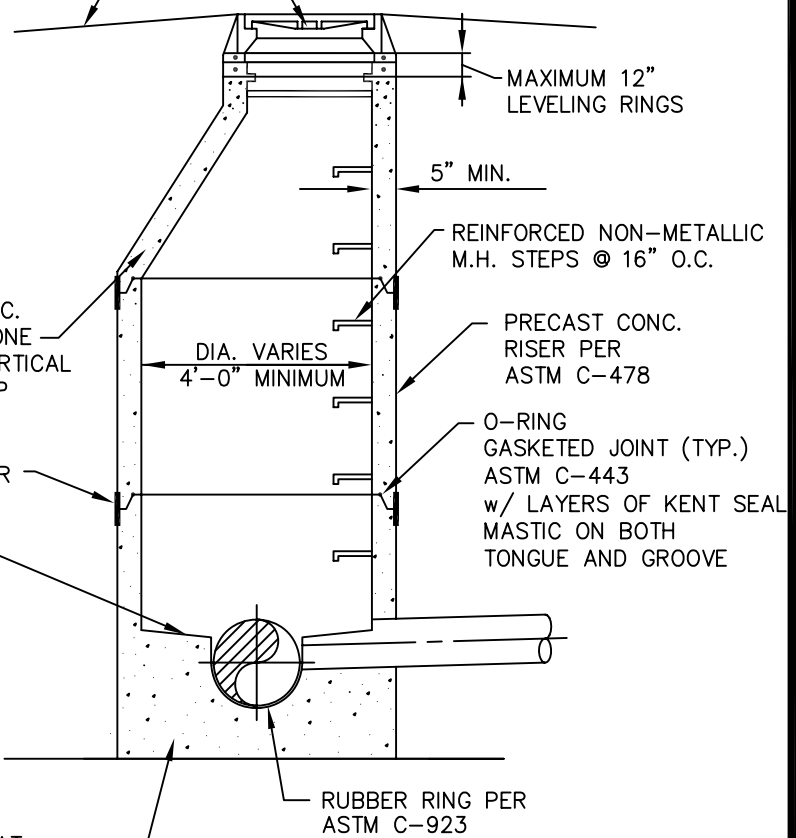
RADIUS NOT LESS THAN 1/2 MANHOLE I.D.



PLAN

FINISHED GRADE (SLOPE TO PREVENT STORM DRAINAGE FROM ENTERING MANHOLE)

MANHOLE FRAME AND LID MARKED SANITARY (SET FLUSH WITH FINISHED GRADE UNLESS NOTED OTHERWISE)



PRECAST CONC. ECCENTRIC CONE W/MIN. 2" VERTICAL WALLS AT TOP

BUTYL RUBBER OR EXTERIOR JOINT COLLAR (TYPICAL EACH JOINT)

CONCRETE BENCH - SLOPE 1" PER FOOT TO WALL, BENCH HEIGHT EQUAL TO 0.8 PIPE DIAMETER (MINIMUM CONCRETE STRENGTH OF 2500 PSI)

NOTE :

1. FOR ALL MANHOLES 6'-0" OR LESS IN DEPTH - PROVIDE RISER WITH FLAT TOP IN LIEU OF ECCENTRIC CONE IN ACCORDANCE WITH ASTM C-478
2. THE CROWN OF THE INFLUENT PIPE SHALL BE AT OR ABOVE THE CROWN OF THE OUTLET PIPE
3. DROP MANHOLES SHALL BE USED WHENEVER THE DISTANCE FROM THE INVERT OF THE INCOMING LINE AND BOTTOM OF MANHOLE IS GREATER THAN TWO FEET.

STANDARD SANITARY MANHOLE DETAIL



NO.	REVISION	DATE

TOWN of BARGERSVILLE, INDIANA

FIGURE

APPROVED _____ DATE _____
 APPROVED _____ DATE _____
 APPROVED _____ DATE _____

1

